

# BONNEVILLE, THE DALLES, AND JOHN DAY DAMS SPILLWAY AND STILLING BASIN IMAGES

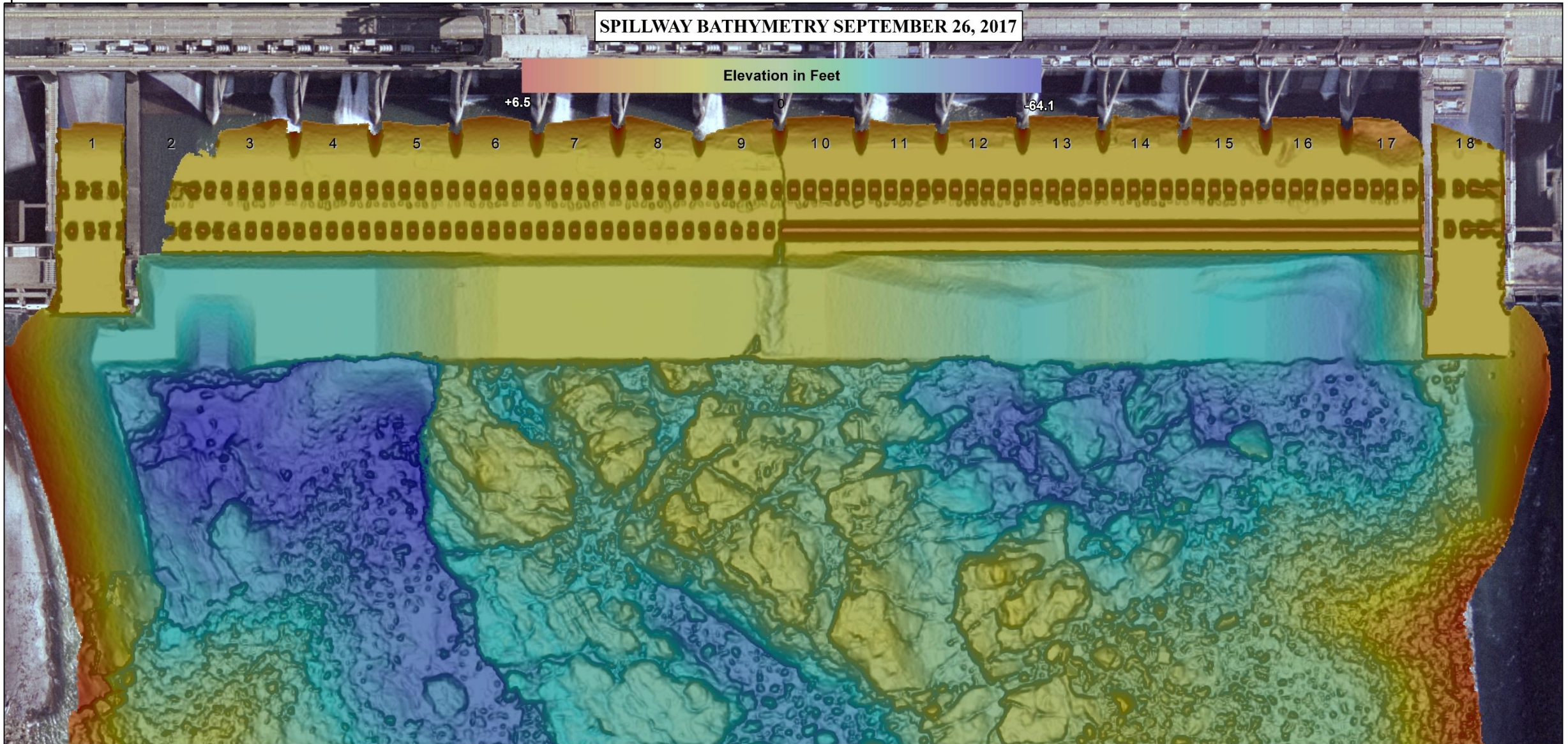
Jacob Macdonald  
USACE Northwestern Division, Portland District  
Hydraulic Design  
Presented at: NWP FFDRWG  
Date: June 6, 2019



US Army Corps  
of Engineers®

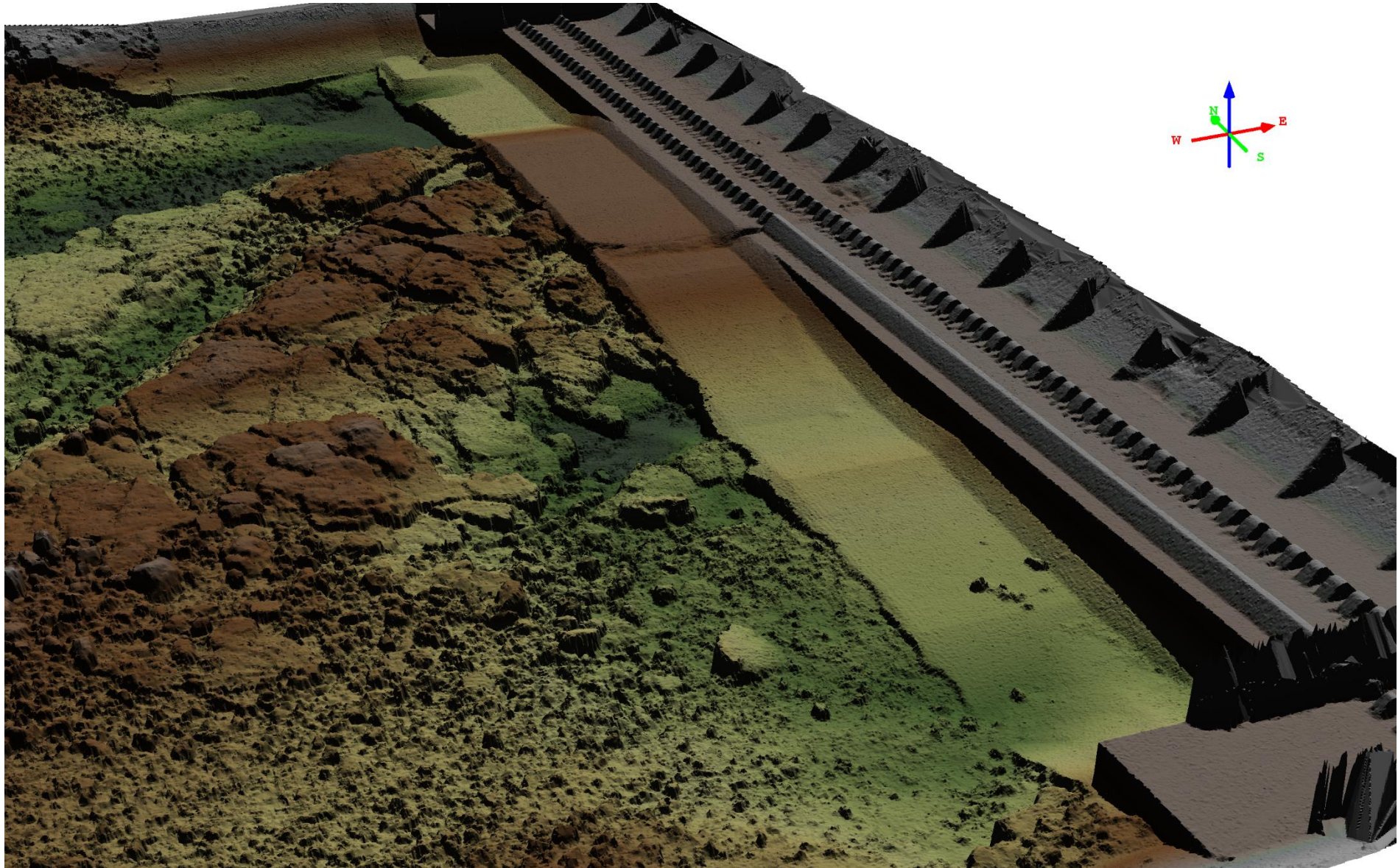


# BONNEVILLE DAM SPILLWAY



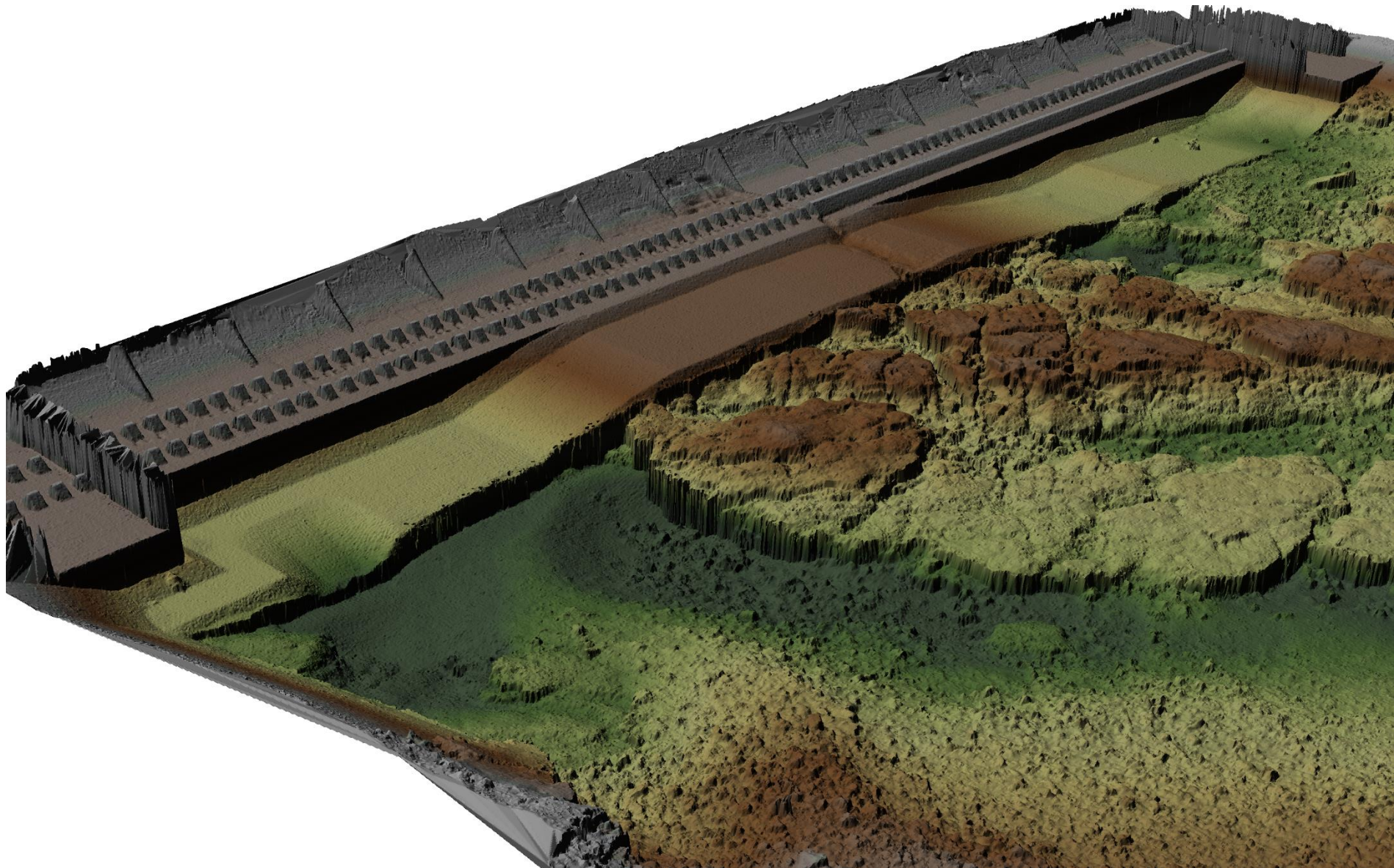


# BONNEVILLE DAM SPILLWAY



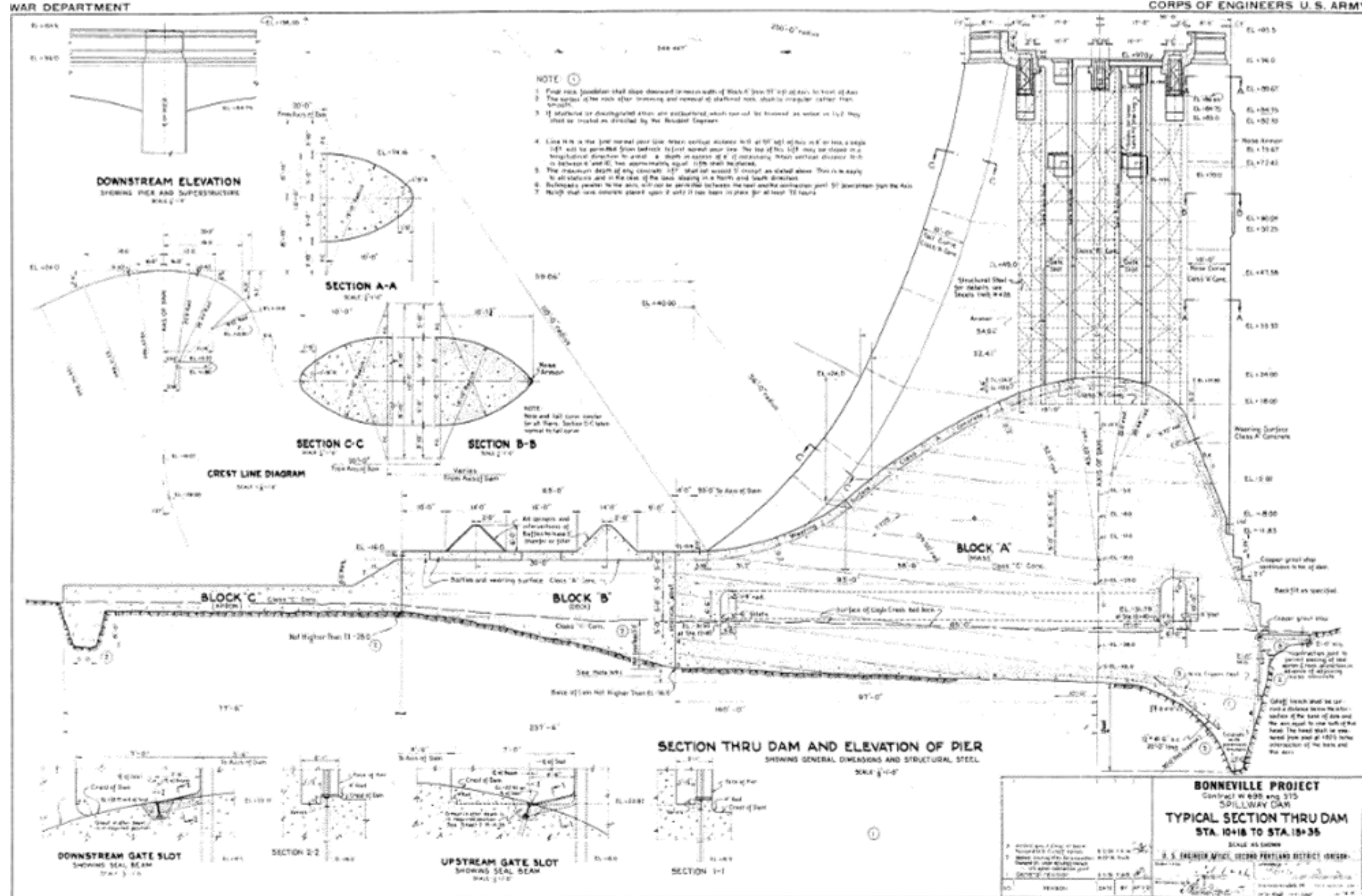


# BONNEVILLE DAM SPILLWAY





# BONNEVILLE SPILLWAY SECTION

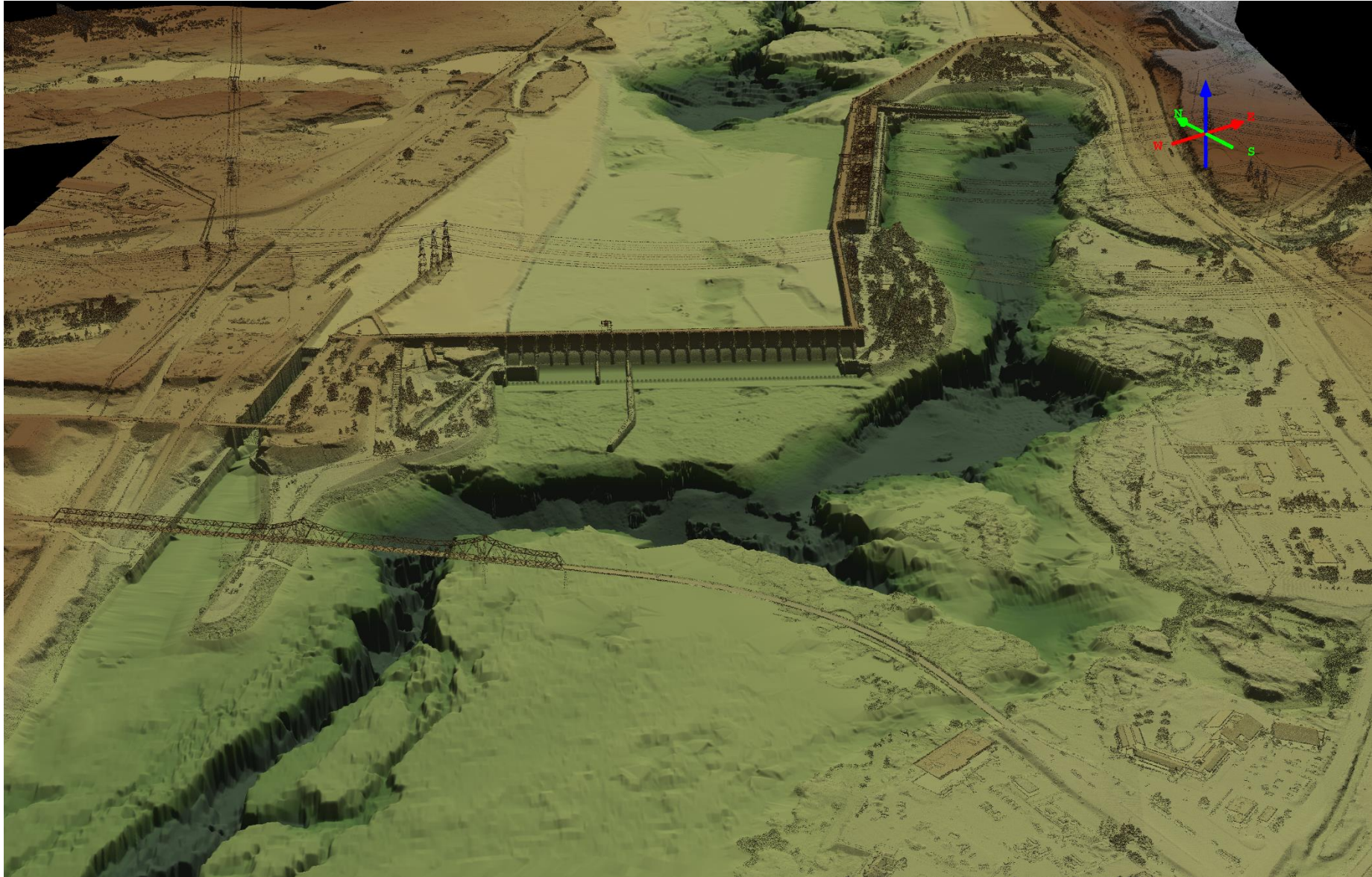


Thing to Note:

Very Little Elevation Change Between Ogee and Tailwater



# THE DALLES DAM SPILLWAY



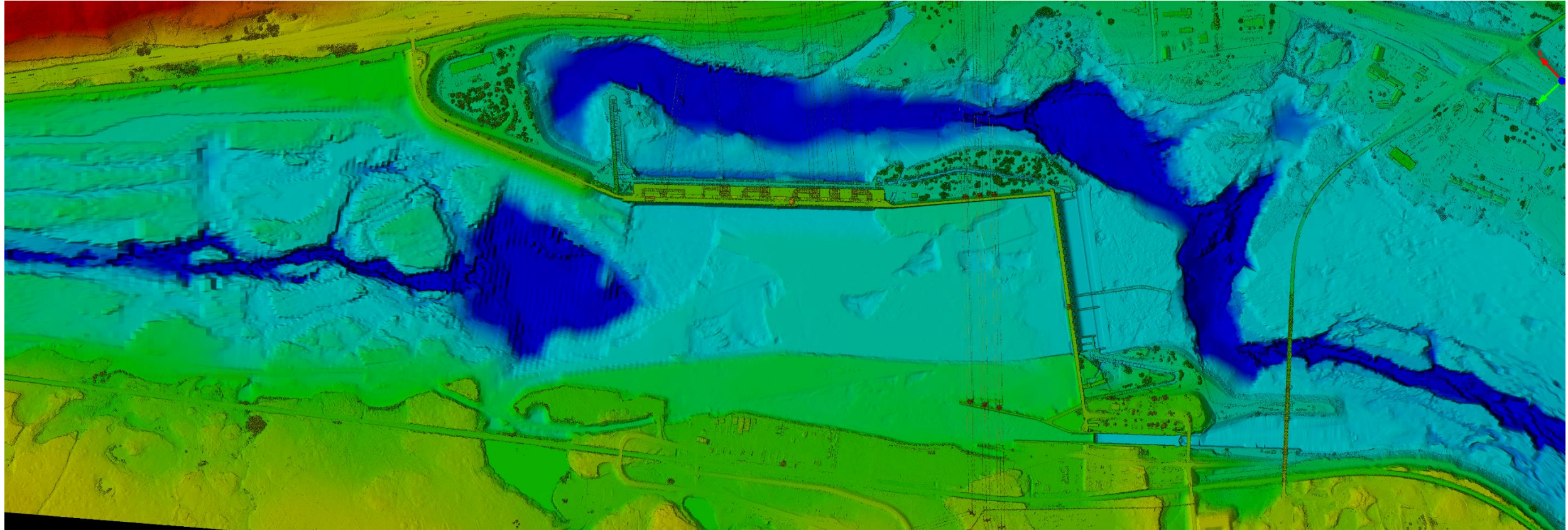


# THE DALLES DAM SPILLWAY





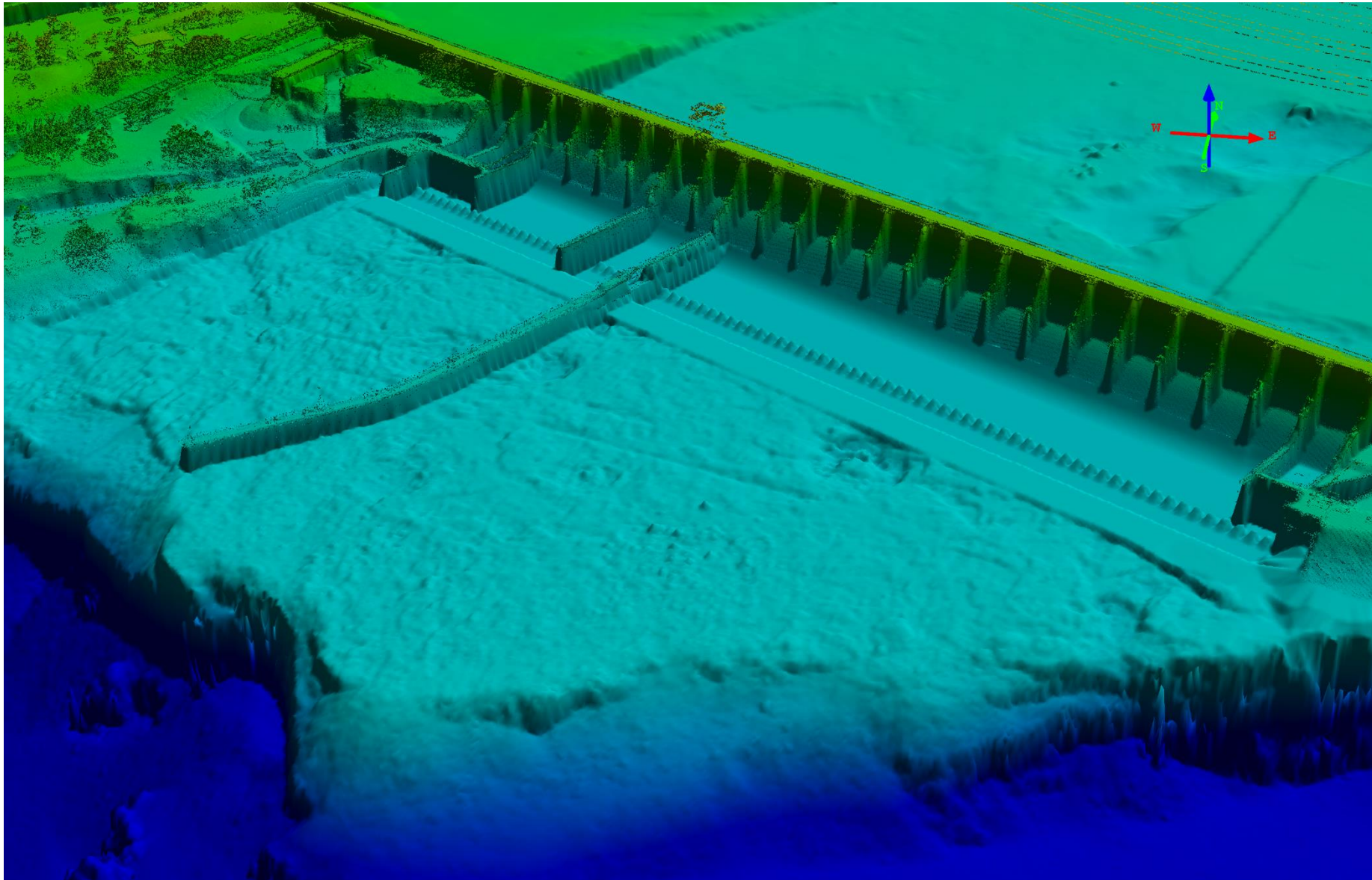
# THE DALLES DAM BATHYMETRY





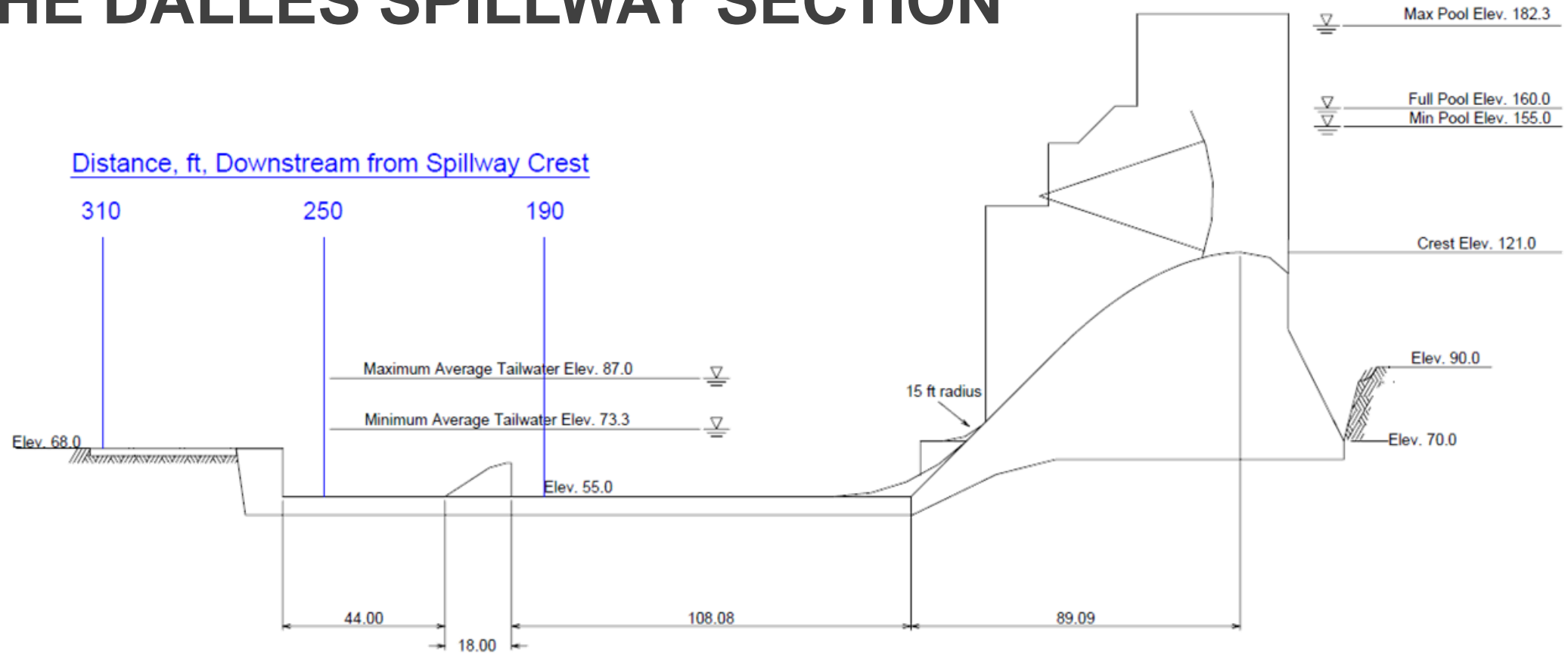


# THE DALLES DAM SPILLWAY





# THE DALLES SPILLWAY SECTION

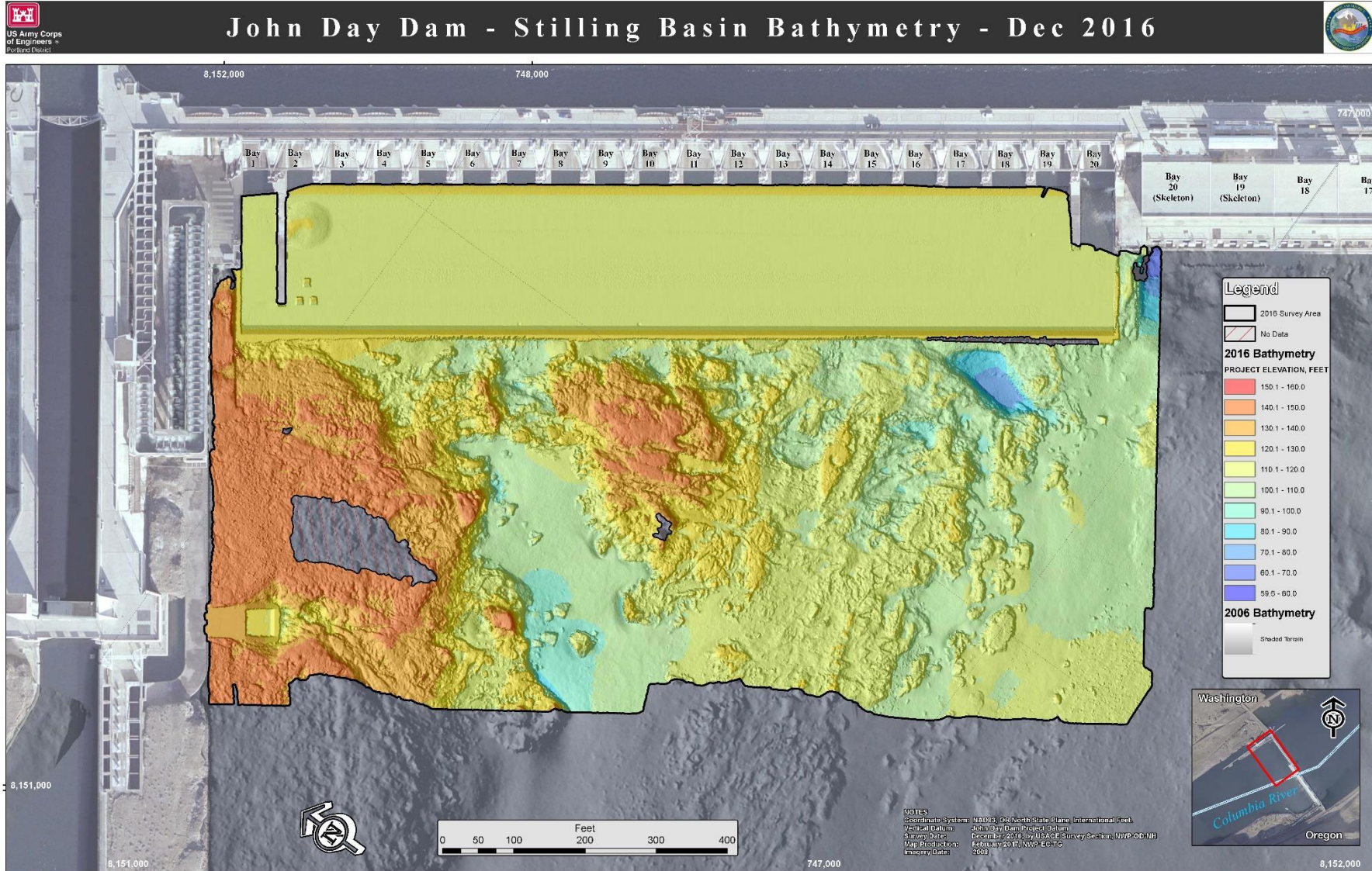


Things to Note:  
 SHALLOW Tailrace down stream  
 SHALLOW stilling basin

Figure 1. The Dalles Section Model, Elevation View



# JOHN DAY SPILLWAY





# JOHN DAY SPILLWAY SECTION

Things to Note:

Deep Tailrace  
downstream

Deep stilling basin

